



OceanPack™ PlanktonSampler

Mulifunctional sampler - especially for plankton -
even in rough seas

- Separate, tightly closing, chilled & preserving sampler-bottles
- Highly reliable, robust & water proof design
- Autonomous unattended operation and easy to maintain
- Scalable configuration

Developed with researchers from around the world for a wide range of deployments: Its flexible design allows a quick and easy adaption on different sampling strategies!

Features:

- 16 sample bottles on two drawers stored in cooled environment
- Automatic preservation after sampling - bottles are separately closed by valves for safe handling even with toxic agents
- GPS interface for georeferencing
- 7" touch screen for easy configuration of sample settings
- Real time data output and USB interface for data download



Characteristics	<ul style="list-style-type: none"> • Operation under harsh conditions (+/- 30° ship roll angel) • Unattended operation • Standalone or controlled by external flow through system (FerryBox).
Operation	Automatic continuously sampling; flow and pressure controlled. Event based sampling: sample volume, sampling time, cloaking and geographical position.
Sample storage temperature	The 16 sample chambers are mounted in a chilled and completely closed environment (5°C).
Water supply	Passive, provided by vessel or external pump
Sample configuration	Mesh size is freely selectable. Typical configuration: <ul style="list-style-type: none"> • 200 µm for Mesoplankton • 1.6 mm for larger Mesoplankton
Micro controller	Embedded NetDI® controller for instrument control and data logging.
Data logger	Storage of meta data and data from (housekeeping) sensors: e.g. flow rate, sample volume, GPS, sample temperature.
Data output	RS-232 or RS-485 • optical isolated • ASCII NMEA-0183 data format
Data input	GPS • Additional integration of external devices on request.
Display	7" colour touch screen • Overview data & configuration menus Easy to use under on board conditions



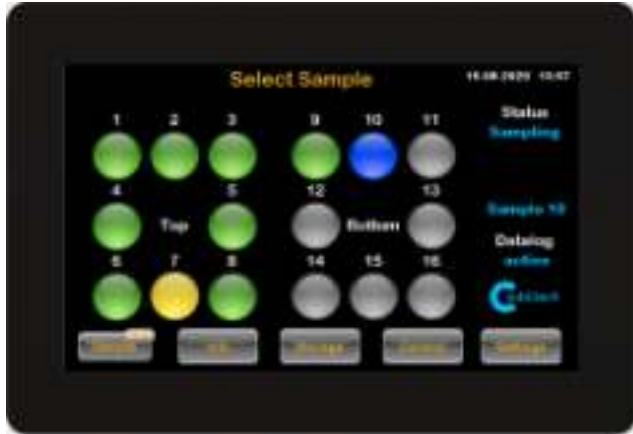


Figure 1 - info screen for sample status

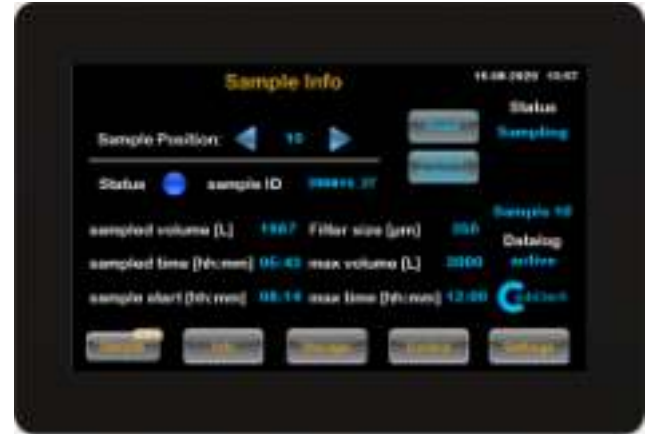


Figure 2 - sample info display

Intuitive control via 7" touch display with fast sample overview. Sample status is indicated by colours on the main display.

Each sample is clickable for individual sample configuration and more information such as sample start, filter mesh size and sampled volume.

Sample stop event is user-programmed to a maximum sample time or volume. Every sample is equipped with an individual sampleID for easy post processing using stored data.

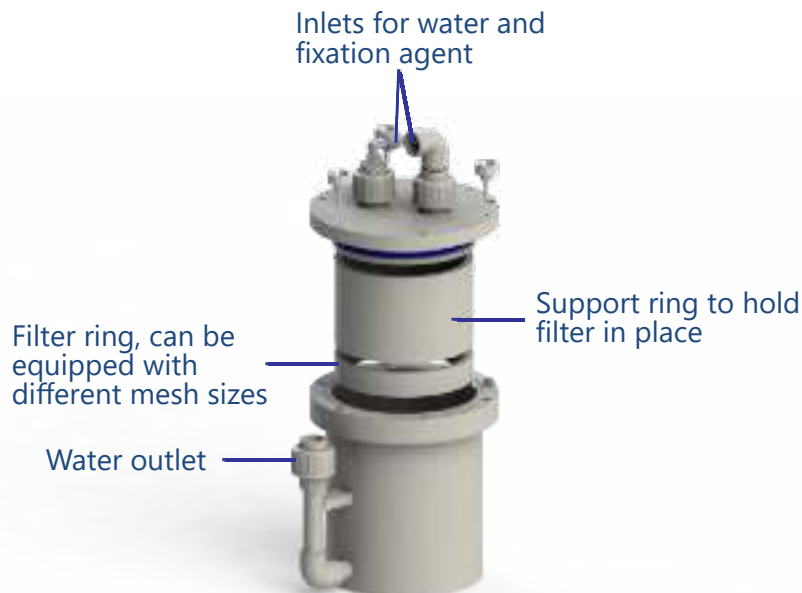


Figure 3 - sample bottle

